

CRICKLADE TWINNING NEWS & EVENTS

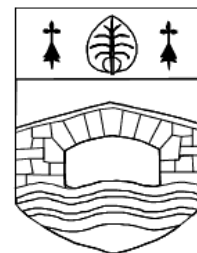
April 2012

Visit www.crickladetwinning.org.uk
or www.nosamisdecricklade.eu

CRICKLADE AND DISTRICT TWINNING ASSOCIATION



Cricklade



Sucé-sur-Erdre

2012 Twinning Visit Royal Weekend

The Queen's Diamond Jubilee extended Bank Holiday has been confirmed. That means the weekend starting Friday 1st June through to Tuesday the 5th June.

Currently our French friends are due to arrive in Cricklade at **5pm on Friday 1st June** and will leave at **around 5pm on Sunday 3rd June**.

The itinerary is now fixed with only minor changes being likely.

Full Itinerary

Friday 1st June

- French visit Cirencester in the afternoon so that they avoid the Bank Holiday going to the coast.
- 5pm or just before French arrive Cricklade
- 5pm Town Council Reception in the Town Offices
- 6pm time with families

Saturday 2nd June

- 10.30am leave for Gloucester
- Visit Gloucester with various bits of organised tour
- Arrive back in Cricklade 5pm ish
- 7pm Alice in Wonderland Evening with Pig Roast at Prior Park (see pages 2/3)

Sunday 3rd June

- Time with families until 4.30pm
- 4.30pm assemble to put the French back on the coach and farewell ceremony

If you are hosting you should have received notification and notes. We will keep you up to date with the fine details as we approach arrival.

Hosts needed

We still have a couple of folks to place – one of whom is the driver. If you would like to host then please let me know (Chris Faulkner – chrisfaulkner@research-qed.co.uk).

The Alice in Wonderland Meal on Saturday

All members are welcome to attend the evening, you don't have to be a host and feel free to bring friends.

Fancy Dress is encouraged; we have attached some ideas at the end of this newsletter.

Our French guests attend for free, everyone else pays £10 except for Children under 16, who pay £5.00 per family (yes if you have 10 kids they cost £5.00).

You will need to bring your own drinks on the evening, but all the other food will be provided.

Please let us know if you will be attending by the end of April or at least that you might be so that we can sort out tables, numbers invites etc. Please let Celia Binfield know on 01793 751137 or celia.binfield@btoopenworld.com.

Other events for the Weekend

There will be some planned activities in Gloucester, which will be paid for by the Twinning Association. We will have use of the French coach, but may need some people to travel to Gloucester independently.

More details of the Gloucester visit shortly and some ideas of what you can do in the free format parts of the afternoon.

Croquet Sets

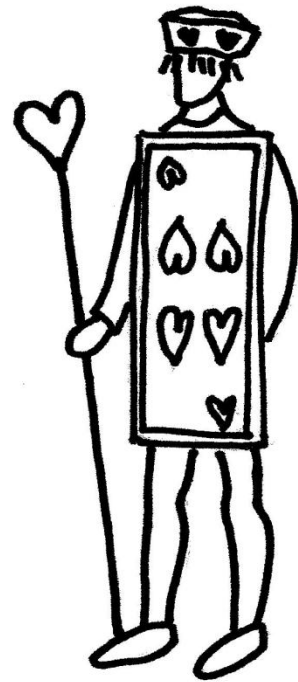
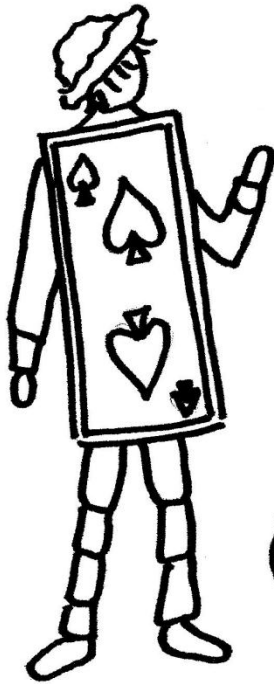
Do you have a croquet set we could borrow for the Alice in Wonderland Evening? Or do you know someone who does?

Other events for your diary

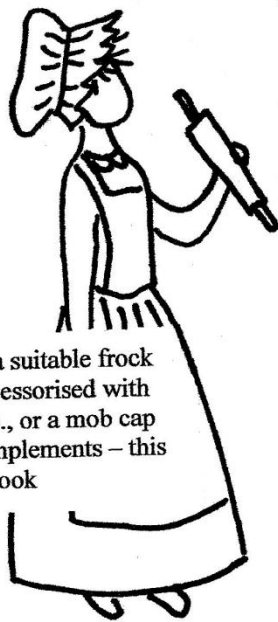
- Bottle stall (to be confirmed) at Cricklade Festival – 17th June
- Summer BBQ – 14th July
- Petanque competition – 2pm 11th August
- Quiz night – towards end of September
- Safari Supper – end of November

Basic Costume Ideas for Alice in Wonderland

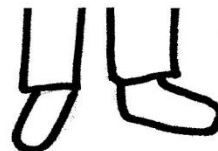
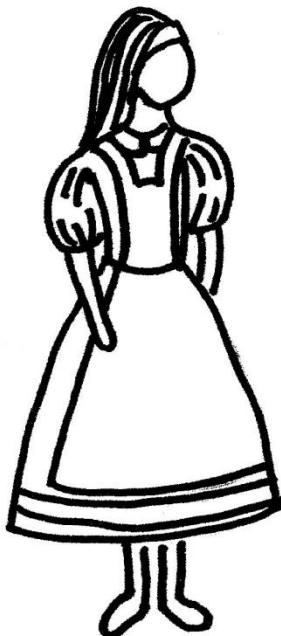
Starting with the simplest first, a playing card tabard made from card or two pillow cases with felt or paper shapes attached. Worn with leggings, tights, or trousers tied at intervals with string. Suitably accessorised this can be the soldiers, gardeners, knave of hearts or even the Queen's axeman (nothing actually sharp or dangerous please-health and safety!)

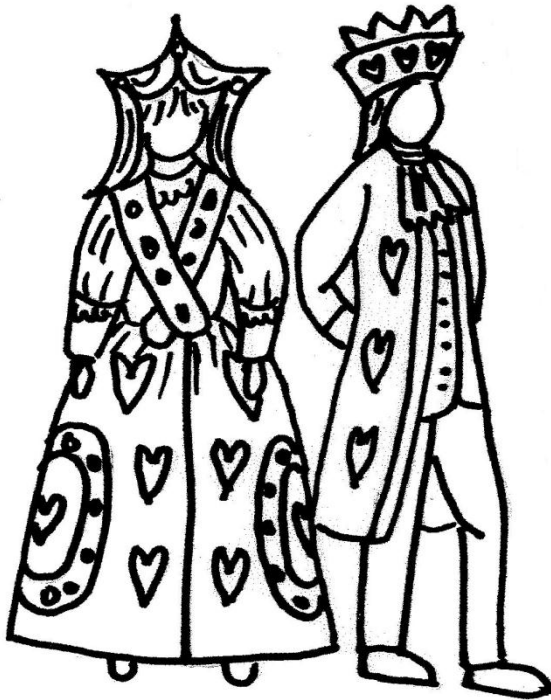


For the ladies, a suitable frock or skirt with apron, accessorised with either an alic band etc., or a mob cap or scarf and cooking implements – this could be Alice or the cook



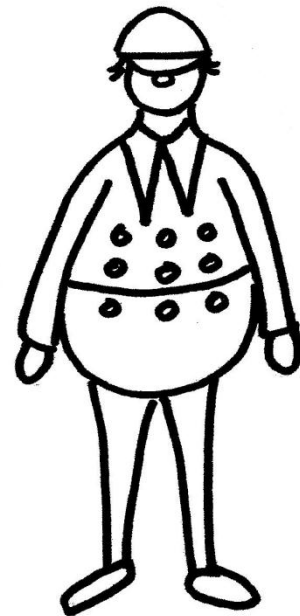
For the gents – trousers, jacket, waistcoat, cravat, (not too tasteful!) could make the mad hatter or white rabbit. Add large top hat with price label or pocket watch and rabbit ears respectively. Brown ears for the march hare.





A little more ambitious, the king and or Queen of Hearts would need a long frock or jacket embellished with felt shapes and suitably bejewelled. Crown or headdress made of card.

Tweedledum and Tweedledee – lots of padding, stretchy top and leggings, buttons, collar and cap.



Not all the characters by any means, just a few ideas to get you all started, feel free to add your own!